

# DVD CAM Software Support Center

## Software Tutorials

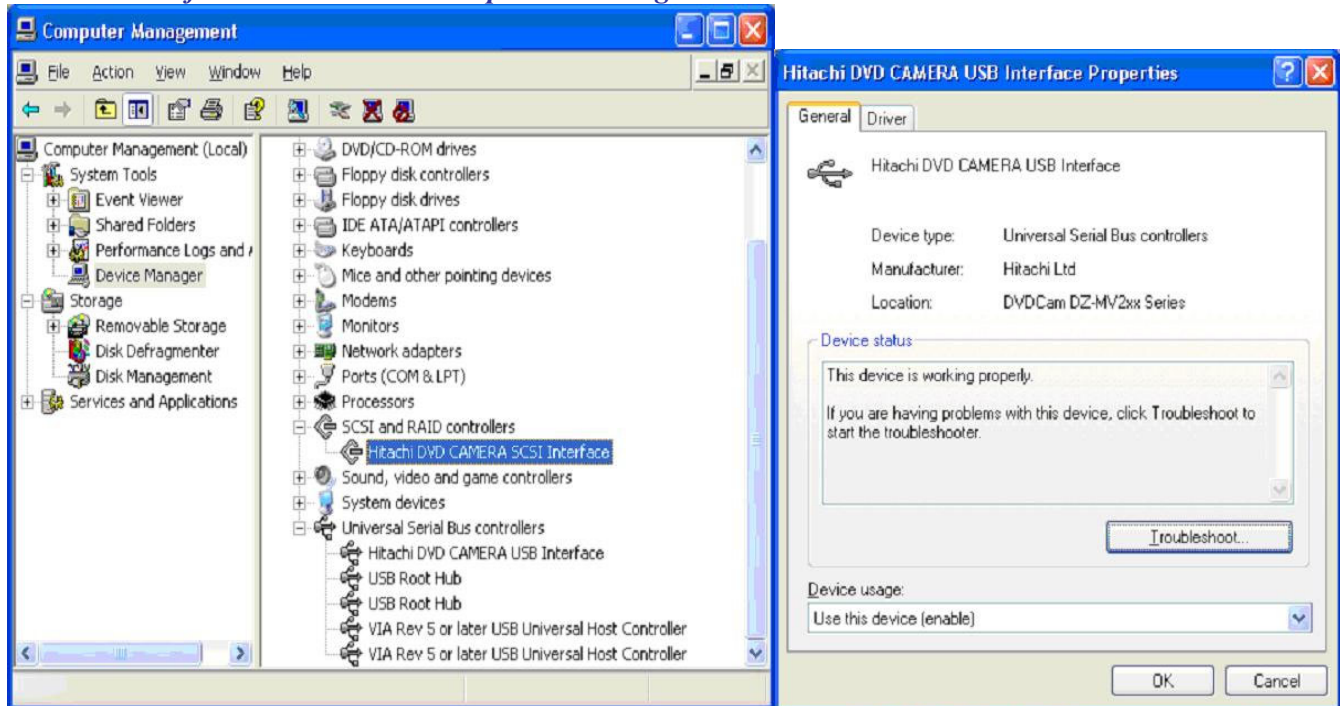
### Driver Installation Manual: Confirming the installation

*Confirming the Driver Installation: There are other ways to confirm whether the device is working properly or not. The page below shows an example to check whether Hitachi DVD video camera / recorder drivers are installed correctly. (The below example screen is from Window XP)*

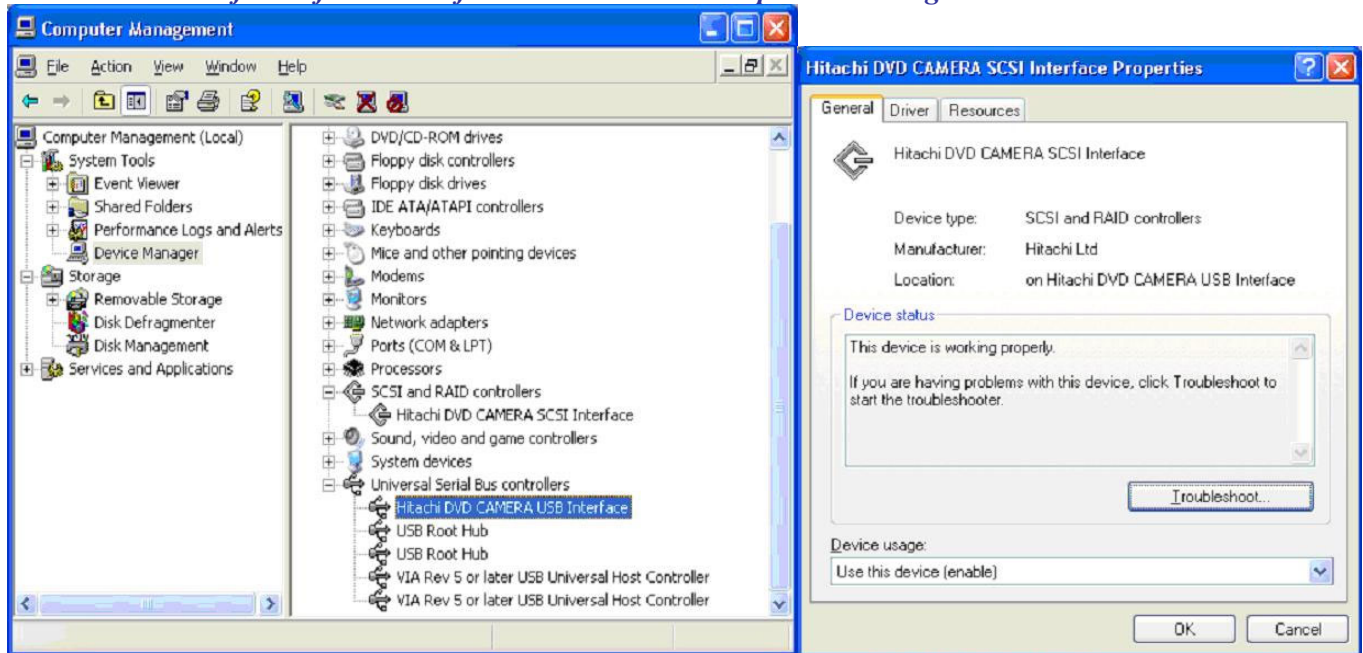
1. *Make sure that Hitachi DVD video camera / recorder, powered on to the position at "VIDEO" or "PHOTO", is connected with PC via USB cable.*
2. *Go to Device Manager on your PC.*

*Path (Window XP and Window 2000): Start > Control Panel > Administrative Tools > Computer Management  
Path (Window Me and Window 98/98SE): Start > Control Panel > System*

3. *Double-Click on "Hitachi DVD CAMERA SCSI Interface" under SCSI and RAID controllers to see the device status. If your screen shows as below then the installation was successful. After the confirmation close the "Properties" dialog box.*

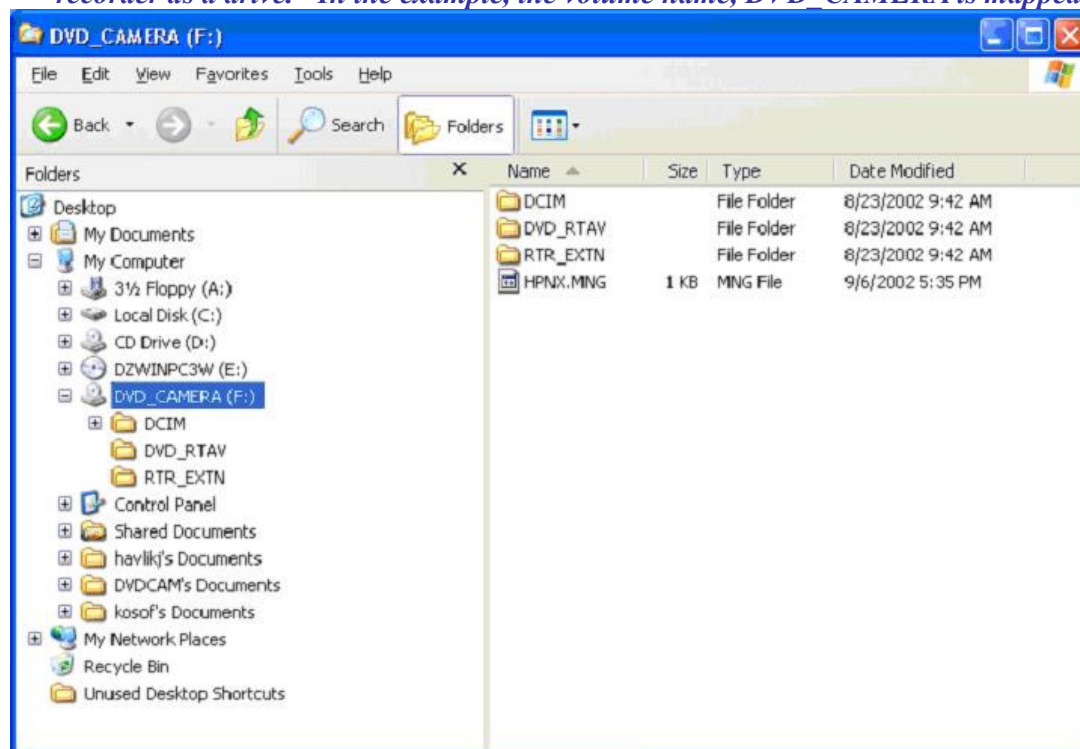


4. Next, double-Click on "Hitachi DVD CAMERA USB Interface" under Universal Serial Bus controllers to see the device status. If your screen shows as below then the installation was successful. After the confirmation close the "Properties" dialog box.



*If you have the device status other than the above and you are experiencing problems. Then go to [Trouble-Shooting Guide](#).*

5. Use My Computer or Windows Explorer to check if PC recognize Hitachi DVD video camera / recorder as a drive. In the example, the volume name, DVD CAMERA is mapped as F: drive



6. When there are still image files in the disc (Photos), you should be able to see them as JPEG files under  $\backslash DCIM \backslash 100HPNX1 \backslash$  directory.

